



SPECIFICATIONS

Intended Use:

Pole mounted applications from twenty to forty feet. Applications include parking areas adjacent to Home Centers, Big-Box Retailers, Retail Centers, Stadiums, Arenas, and applications for campus parking areas, Auto Dealerships, and transportation hubs.

Construction:

- Innovative product design delivers exceptional thermal management in an highly styled luminaire
- Manufactured with a die cast, low copper content, aluminum housing coated with a Lektrocote® polyester finish ensures excellent exterior durability
- Two directional air flow maximizes heat dissipation to prolong electrical component life and luminaire performance
- Performance is further optimized with thermal separation between LED light engines and LED drivers

LED/Optics:

- 32L configuration - 26,000 lumens, 293w
- 48L configuration - 40,000 lumens, 435w
- 64L configuration - 51,000 lumens, 580w
- PMMA lenses provide IES Types III, IV & V
- Specific optical distributions for Automobile dealerships are available
- Back light control is available for applications sensitive to light trespass; zero uplight ensures lighting design implementation
- Color temperatures offered: 3000K (80 CRI), 4000K (70 CRI), 5000K (70 CRI)

Electrical:

- Universal input voltage 120-277VAC, 50/60 Hz and 347-480VAC
- Ambient operating temperature range -40C to 40C
- Surge protection – 20KA; Shuts off at end of life

Controls/Options:

- Features wiSCAPE technology wireless system for on/off and 0-10VDC full range dimming control; programmable autonomous operation
- 0-10V dimming leads available for external controls provided by others
- NEMA twistlock Photocells for On/Off control
- Occupancy sensors with On/Off and dimming control

Installation:

- Universal arm mounting and Mast arm options allow for installation flexibility for new construction and retrofit projects
- Modular design allows for 1 person installation

Finish:

- TGIC thermoset polyester paint finish applied at nominal 2.5 ml thickness

Listings:

- CSA Listed to UL1598 Wet Locations
- Models meet DesignLights Consortium (DLC) qualifications, consult DLC website for more details: <http://www.designlights.org/QPL>
- IDA approved
- IP65
- Suitable for 3G applications prescribed by ANSI C136.31

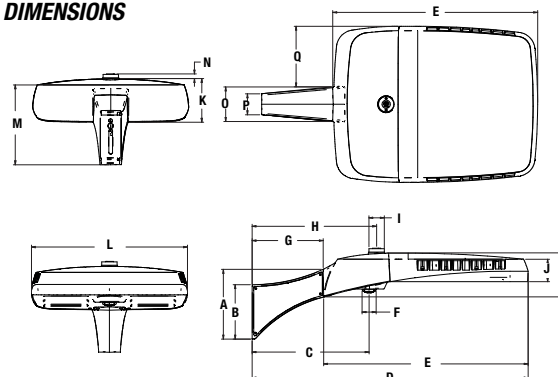
Warranty:

Five year limited warranty (for more information visit: <http://www.hubbelloutdoor.com/resources/warranty/>)

PRODUCT IMAGE(S)



DIMENSIONS



A	B	C	D	E	F	G	H	I
11.62"	9.06"	19.50"	46.00"	34.07"	2.34"	11.86"	20.75"	2.56"
295mm	230mm	495mm	1168mm	863mm	59mm	301mm	527mm	65mm
J	K	L	M	N	O	P	Q	
3.74"	7.28"	26.00"	13.30"	.75"	5.74"	3.47"	10.10"	
95mm	184mm	660mm	337mm	19mm	145mm	88mm	256mm	

Arm	Driver Enclosure	LED Array	Total Weight
8.8 lbs.	29.75 lbs.	37.25 lbs.	75.8 lbs.
3.9 kgs.	13.5 kgs.	16.9 kgs.	34 kgs.

EPA

	Config.	EPA		Config.	EPA
	1	1.4		3 @ 120°	2.9
	2 @ 90°	2.4		3 @ 90°	2.9
	2 @ 180°	2.8		4 @ 90°	2.9

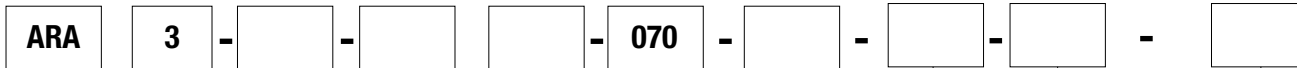
CERTIFICATIONS/LISTINGS



IP65

ORDERING INFORMATION SEE NEXT PAGE

ORDERING INFORMATION ORDERING EXAMPLE: ARA3-A-64L5K-070-4-U-DB



SERIES	MOUNTING	NO. OF LEDS	LED COLOR	IES DISTRIBUTION	VOLTAGE	FINISH	STANDARD OPTIONS
ARA ¹ Arceos™ large area/site luminaire	A Arm (universal) MAF Fitter for 2 3/8" horizontal arm or vertical tenon. Provisions for 0°, 5°, and 10° tilt.	64L 64 LEDs 48L 48 LEDs 32L 32 LEDs	3K 3000K, 80 CRI 4K 4000K, 70 CRI 5K 5000K, 70 CRI DRIVE CURRENT 070 700mA	1A Auto Front Row Type I 1AL Auto Front Row Type I Rotated 90° left 1AR Auto Front Row Type I Rotated 90° right 3 Type III 3L Type III rotated 90° left 3R Type III rotated 90° right 4 Type IV 4L Type IV rotated 90° left 4R Type IV rotated 90° right 5S Type V Short 5W Type V Wide	U 120V-277V 50/60Hz 1 120V 2 208V 3 240V 4 277V 5 480V, 50/60Hz F 347V, 50/60Hz E 220V, 50/60Hz	DB Bronze BL Black WH White PS Platinum Silver GR Gray FG Forest Green RD Red CC Custom Colors (Consult factory)	BC⁷ Backlight control (see page 4) TB Terminal block RPA(X) Round pole adapter (Replace X with 2, 3, 4, 4.5, 5 or 6 indicating pole diameter) F(X) Fusing (must specify discrete voltage) 7PR Photocell receptacle (7-pin ANSI C136.41—2013 receptacle for use with standard Twist-Lock® photo controls, shorting caps, and ANSI C136.41 external wireless control devices. Select SCL option to add occupancy sensing capability when using with compatible external wireless devices)

SIZE
3 Large

CONTROLS GUIDE

As energy codes become more restrictive and we push for sustainable lighting designs, the integration of lighting controls and luminaires have become more and more important. Hubbell Lighting offers numerous outdoor lighting controls solutions for the most demanding applications. Visit the link below to learn more about energy-saving controls.

www.hubbellighting.com/solutions/controls/

- Notes: 1 - Order poles with #2 hole pattern
2 - Not available with 480V
3 - Not available with 347V or 480V
4 - Not available with WIR or WIRSC
5 - Not available with SCO, SCL, SCP or SCPW
6 - 0-10V fully adjustable dimming with automatic daylight calibration and different time delay settings, must order minimum of one SCP-REMOTE control to program dimming settings (see accessories)
7 - Not recommended for Type V distributions

ACCESSORIES/REPLACEMENT PARTS - Order Separately

Catalog Number	Description
SCP-REMOTE	Remote control for SCP and SCPW options. Order at least one per project to program and control
93054384	20KA surge protection 120-277V
93054385	20KA surge protection 347-480V
SETA 2-XX ¹	Square pole tenon adapter (4 at 90 degrees)
RETA 2-XX ¹	Round pole tenon adapter (4 at 90 degrees)
TETA 2-XX ¹	Hexagonal pole tenon adapter (3 at 120 degrees)
TPLB-ARA3-XX ¹	Twin parallel luminaire bracket
ARA3-BC	Backlight control for light trespass mitigation. Kit includes 4 bezel shields.
WB-AREA-XX	Wall bracket

¹ Replace XX with color choice, eg.: DB for Dark Bronze

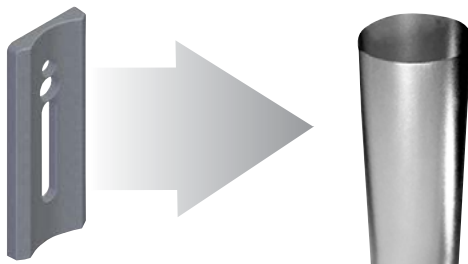
PIR MOTION/OCCUPANCY CONTROL OPTIONS

- SCO^{3,4}** On/Off control (line voltage device not for use with 7PR receptacle option and external wireless control devices)
- SCL^{3,4}** Add-on occupancy sensor for use with ext. wireless control device connected thru 7PR receptacle. Consult control manufacturer for compatibility
- SCP^{3,4,6}** Programmable dimming control (line voltage device not for use with 7PR receptacle option and external wireless control devices). A minimum of one SCP-REMOTE accessory remote control required for configuration; (Standard lens with greater sensitivity; motion detection radius equal to .75 X luminaire mounting height (approx. distance))
- SCPW^{3,4,6}** Programmable dimming control (line voltage device not for use with 7PR receptacle option and external wireless control devices); A minimum of one SCP-REMOTE accessory remote control required for configuration. (Wide lens with motion detection radius equal to 1.3 X luminaire mounting height (approx. distance))

WIRELESS CONTROL OPTIONS

- WIR²** wiSCAPE Fixture Module, in-fixture relay for wireless lighting control
- WIRSC^{3,5}** wiSCAPE Fixture Module, in-fixture relay for wireless lighting control and motion/occupancy control

MOUNTING OPTIONS & ACCESSORIES



Catalog Number	Description
RPA Round Pole adapters are available for 2, 3, 4.5, 5, and 6 inch diameter round poles	
RPA2-ARA3-XX ¹	Round Pole adapters for 2-1/2" – 3" diameter mounting surface
RPA3-ARA3-XX ¹	Round Pole adapters for 3" – 3-3/4" diameter mounting surface
RPA4-ARA3-XX ¹	Round Pole adapters for 3-7/8" – 4-1/2" diameter mounting surface
RPA5-ARA3-XX ¹	Round Pole adapters for 5" – 6" diameter mounting surface
RPA6-ARA3-XX ¹	Round Pole adapters for 6" diameter mounting surface

¹ Replace XX with color choice, eg.: DB for Dark Bronze



HUBBELL
Outdoor Lighting

ARA Series
Area/Site

ARCEOS™

PERFORMANCE DATA

# LED'S	DRIVE CURRENT (MILLIAMPS)	SYSTEM WATTS	DISTRIBUTION TYPE	5K (5000K nominal, 70 CRI)					4K (4000K nominal, 70 CRI)					3K (3000K nominal, 70 CRI)				
				LUMENS	LPW ¹	B	U	G	LUMENS	LPW ¹	B	U	G	LUMENS	LPW ¹	B	U	G
32	(700 MA)	293W	1A	27158	93	3	0	3	26705	91	3	0	3	25257	86	2	0	2
			3	26922	92	4	0	5	26472	90	4	0	5	25037	85	3	0	4
			4	26869	92	3	0	5	26421	90	3	0	5	24988	85	2	0	4
			5	27736	95	5	0	4	27273	93	5	0	4	25794	88	4	0	2
48		435W	1A	39645	91	3	0	3	38983	90	3	0	3	36871	85	3	0	3
			3	39300	90	4	0	5	38644	89	4	0	5	36549	84	3	0	5
			4	39223	90	3	0	5	38568	89	3	0	5	36477	84	3	0	5
			5	40489	93	5	0	4	39813	92	5	0	4	37655	87	5	0	3
64		580W	1A	51651	89	3	0	3	50788	88	3	0	3	48035	83	3	0	3
			3	51202	88	4	0	5	50347	87	4	0	5	47550	82	4	0	5
			4	51102	88	3	0	5	50247	87	3	0	5	47828	82	3	0	5
			5	52751	91	5	0	4	51870	89	5	0	4	49151	85	5	0	3

¹Lumen values are from photometric tests performed in accordance with IESNA LM-79-08. Data is considered to be representative of the configurations shown. Actual performance may differ as a result of end-user environment and application.

PROJECTED LUMEN MAINTENANCE

AMBIENT TEMP.	0	25,000	50,000	TM-21-11 60,000	100,000	Calculated L70 (HOURS)
40°C / 104°F	0.97	0.92	0.85	0.82	0.73	>110,000

¹ Projected per IESNA TM-21-11
Data references the extrapolated performance projections for the **ARA3-64L5K-070** base model in a 40°C ambient, based on 10,000 hours of LED testing per IESNA LM-80-08.

ELECTRICAL DATA

# OF LEDS	NUMBER OF DRIVERS	DRIVE CURRENT (mA)	INPUT VOLTAGE (V)	SYSTEM POWER (w)	CURRENT (Amps)
32	2	(700 MA)	120	293	2.4
			277	293	1.1
			347	293	0.8
			480	293	0.6
48	3		120	435	3.6
			277	435	1.6
			347	435	1.3
			480	435	0.9
64	4		120	580	4.8
			277	580	2.1
			347	580	1.7
			480	580	1.2

LUMINAIRE AMBIENT TEMPERATURE FACTOR (LATF)

AMBIENT TEMPERATURE	LUMEN MULTIPLIER
0° C	1.07
10° C	1.04
20° C	1.01
25° C	1.00
30° C	0.99
40° C	0.96

Use these factors to determine relative lumen output for average ambient temperatures from 0-50°C (32-122°F).

SURGE PROTECTION

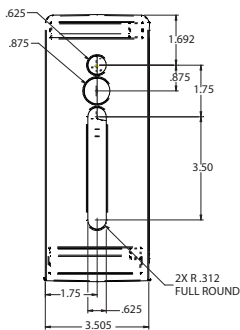
- Field replaceable surge protection device (SPD) provides 20KA and 10KV protection meeting ANSI/IEEE C62.41.2 Category C High and Surge Location Category C3
- The SPD is designed with a clamping voltage of 1400V at 20KA using industry standard 8/20µs waveform
- Max surge current = 20,000 Amps



HUBBELL
Lighting

MOUNTING ARM DIMENSIONS

ARA3 arms incorporate hole pattern provisions for most major luminaire manufacturers providing retrofit solutions to existing poles. Two bolt patterns range from 1.75" to 5.25" are accommodated. Arms are acceptable for 90° configurations.



Utilize Spaulding's #2 hole pattern when ordering poles

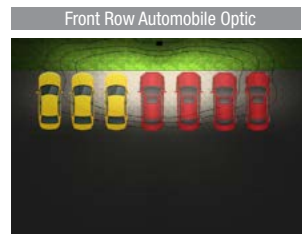
AUTOMOTIVE DEALERSHIP OPTICS

For Automobile Dealership applications the Arceos™ is available with optics designed for enhanced and proper lighting of the auto dealership merchandise on the front row.

The ARA3 high lumen package combined with Spaulding's front row automobile optic maximizes the dealers product merchandising impact. Create dramatic impact on a dealerships lighting and sales revenue with the Arceos™ ARA3 luminaire.

Front Row Automobile Optic Benefits

- Maximum illumination on front row display
- Maximum pole spacing
- Reduced acquisition and ownership costs



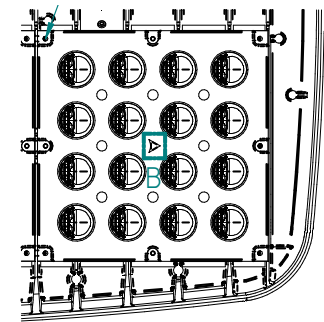
VERSATILE CONFIGURATIONS



- Up to 30 ft mounting heights
- 32 LEDs
- 30-40 ft mounting heights
- 48 LEDs
- Up to 50 ft mounting heights
- 64 LEDs

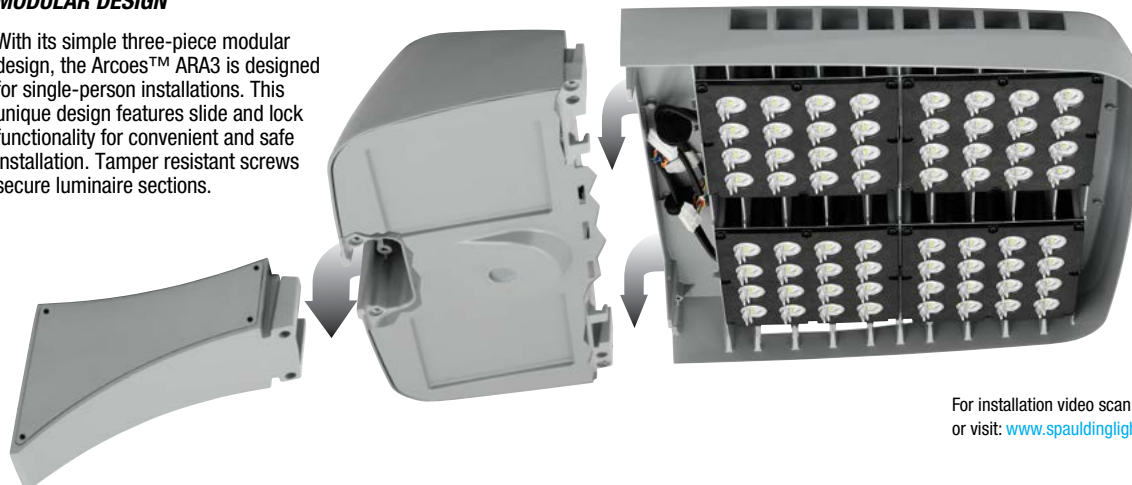
ROTATABLE OPTICS

All distributions are field or factory aimed for maximum design flexibility. The bezel includes a raised arrow to indicate the direction of illumination.



MODULAR DESIGN

With its simple three-piece modular design, the Arceos™ ARA3 is designed for single-person installations. This unique design features slide and lock functionality for convenient and safe installation. Tamper resistant screws secure luminaire sections.



ARA3 BC - Backlight control option for excellent light cutoff and increased forward throw



For installation video scan this code or visit: www.spauldinglighting.com